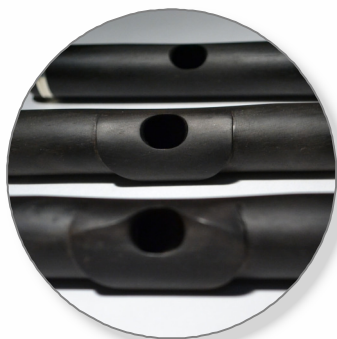


Headjoint Options

Because we all play differently, Nagahara developed three distinct headjoint styles available for each Mini:



- **M1** - the most traditional headjoint style available for the Mini with a flat surface and hand cut embouchure hole. Moderately resistant with nice texture in the sound. This option comes standard with every Mini.
- **M2** - much like a modern flute's headjoint, the M2 style features a carved lipplate for extra comfort and support, providing smoothness in the sound and great flexibility throughout all the registers. This option is available as an upgrade feature.
- **M3** - inspired by our "Konami" lipplate design for flutes, the M3 cut emphasizes clarity of tone and ease of articulation all while projecting a warm mellow tone. The carved lipplate with raised sides help focus the air for immediate gratifying results. This option is available as an upgrade feature.



Nagahara Flutes/ NNI Inc. 131 Stedman Street #7 Chelmsford, MA 01824
Info@nagaharaflutes.com www.nagaharaflutes.com/mini/ Tel: 978-458-1345


NAGAHARA
-Boston-

The
NAGAHARA

Mini



Make a big difference
with a Nagahara *Mini*!

It's not a Piccolo!

At last - the Nagahara Mini has arrived with a revolutionary new design bound to change the way you think about the piccolo! After nearly twenty years of research and experimentation, the Nagahara Flutes staff developed an instrument with improved dynamic contrast, better blending capabilities, an extended range, and much more! Whether you are an orchestral player, member of a flute or woodwind ensemble, or a soloist, the Mini is the perfect choice - raising the bar and setting new musical standards for the Piccolo!

The concept of the Mini emerged from the desire to have an instrument that would be closer to what we see as the original intention of the piccolo: *a miniature flute*.

Traditionally, flutes are made with a cylindrical bore profile on the body and tapered headjoint, while piccolos are made essentially the opposite way - with a tapered body profile that narrows down towards the foot section. Although having a conical shape on the piccolo allows for an easy tone production on the top register, the lower register is often weak and limited. This bore design also makes the intonation tendencies on the piccolo opposite from the flute, making it difficult to control and adjust during ensemble playing (*especially if the piccolo is not your main instrument*). The traditional conical shape also limits the amount of air that can flow through the instrument, creating pressure known to stress and tire the lips after long practice sessions, and often affects the player's flute embouchure as well. These issues have all been improved in the design of the New Nagahara Mini!

The Nagahara Mini was created with a slight taper on the headjoint and an enlarged cylindrical body, allowing it to play more like a flute. The innovative B-footjoint design extends the range of the low register down to b4 using a patented key mechanism system called the "B-key touch". This special design keeps the low B-key closed unless playing low C# or C, giving the effect of a "permanent" gizmo key (just like a flute!) for improved intonation and greater ease of tone production in the upper register.

Additionally, Kanichi Nagahara developed a new scale for the Mini including an increase in the diameter of the tonehole size making them more than twice as big as those found on a traditional Piccolo. The extra ventilation expands the possibilities of musical expression, offering a wider range of dynamic contrast and broader tone color palette.

A new milestone in the history of the flute has been reached with the creation of the Mini. Join us in this great adventure and make a big difference with a Nagahara Mini!



Standard but Special Features

Every Nagahara Mini is handmade at our shop in Chelmsford, MA using unique patented designs and top quality materials. The construction of this revolutionary instrument combines our superior handcrafting techniques with modern technology for best accuracy.

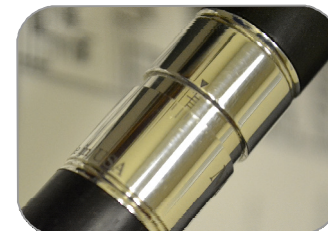
The Mini's standard design comes with the following features:

- Aged exotic wood body & headjoint (*selections include African Blackwood, Pink Ivory, Olive wood and Mopane*).
- Hand-made solid sterling silver mechanism with French-style pointed arms.
- Cylindrical bore body with tapered headjoint.
- Special Scale design (*patent pending*)



- Enlarged toneholes for increased ventilation and greater tone projection.
- Nagahara Thumb key design (*US Patent #5,708,226*).
- B-footjoint with the *NEW B-key touch* system extending range down to low B (*US Patent #7,439,428 B1*).

- Half closing thumb key system
- G#-key touch to facilitate the high G-A trill & G-G# trill (operated by Right-Hand).
- Hand-made custom pad design.
- Left Hand pinless mechanism.



- Precision tenon fitting design.
- A choice of three distinct selections of headjoint lipplate & riser design.